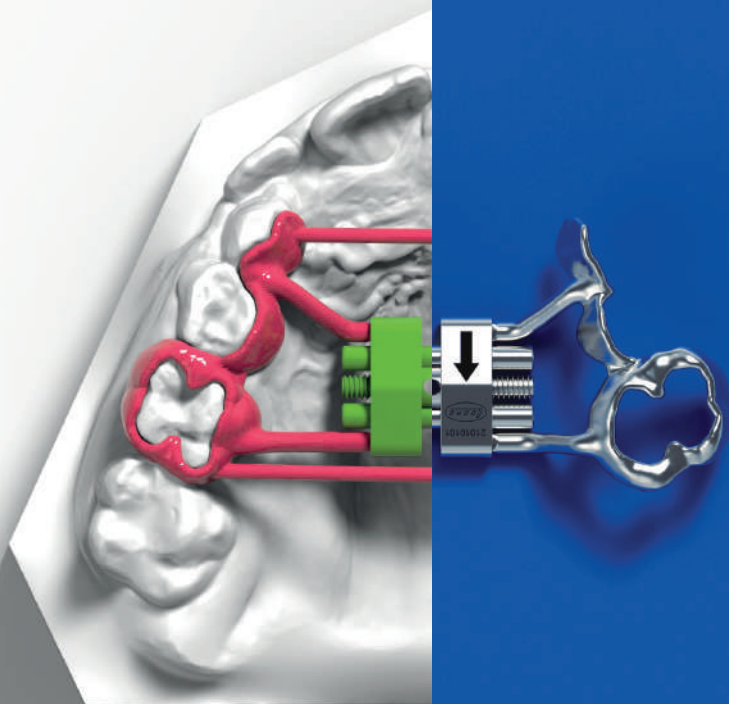


..Tradition meets expertise
of the orthodontics future..



Leone[®]America

COMPLETE **CAD-CAM**
EXPANDER SERIES



- Over 50 years of know-how and millions of successfully treated clinical cases.
- Widest range of palatal expanders and expansion screws on the market, solutions for every therapeutic need.
- Continuous investment in research and development.
- High quality standards.

Now the new
CAD-CAM
Expander Series
designed
for a fully digital
workflow

3DLEONE DESIGNER

Software



3DLEONE DESIGNER is the first software based on an easy and driven workflow for the digital design of customized framework to be coupled with our innovative CAD-CAM expanders.

Based on our experience with many different software in the dental field and due to the increased customer requests, Leone has made out an innovative and intuitive software that allows to design, not only bands and supports, but also the expander arms, and can automatically place the expander also in the right position, in very short time and independently from the digital skills.

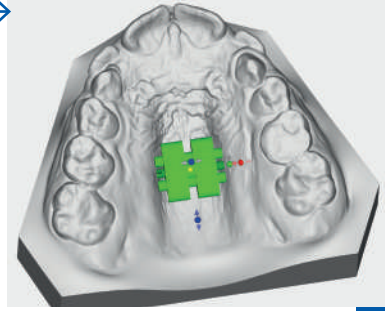
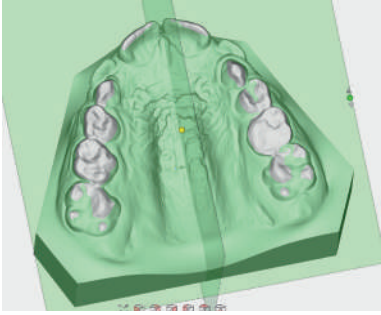
3DLEONE DESIGNER software allows to upload and manage the .STL files of both upper and lower arches, obtained from a laboratory scanner or directly from an intra-oral scanner, and it has already in library all the range of Leone's CAD-CAM expanders available.

Once the digital driven workflow is completed, thanks to an innovative technology called Selective Laser Melting, the designed .STL file will become, a high precision sintered framework and will be coupled perfectly with the chosen Leone CAD-CAM expander. Then the framework and the expander will be permanently laser welded.

For further information on **3DLEONE DESIGNER** software visit www.leone.it/3dsoftware

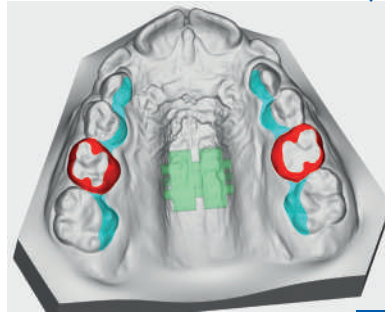
3DLEONE DESIGNER Workflow

MODELS
ORIENTATION



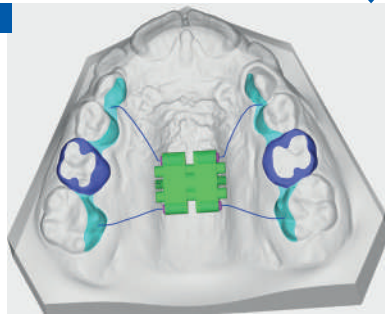
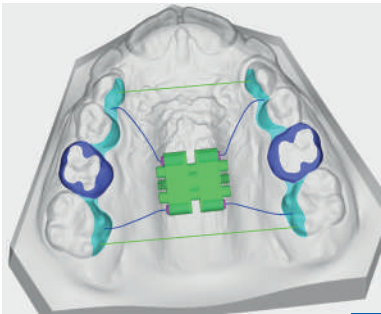
SCREW POSITION
DEFINITION

Designing and
creating new
entirely customized
orthodontic solutions



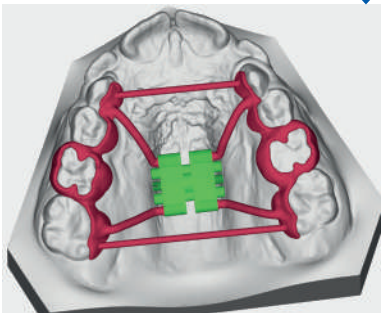
BANDS
DEFINITION

SUPPORT
DEFINITION



ARMS
DEFINITION

REVIEW &
EXPORT



FREE
TRIAL



3DLEONE DESIGNER

Software

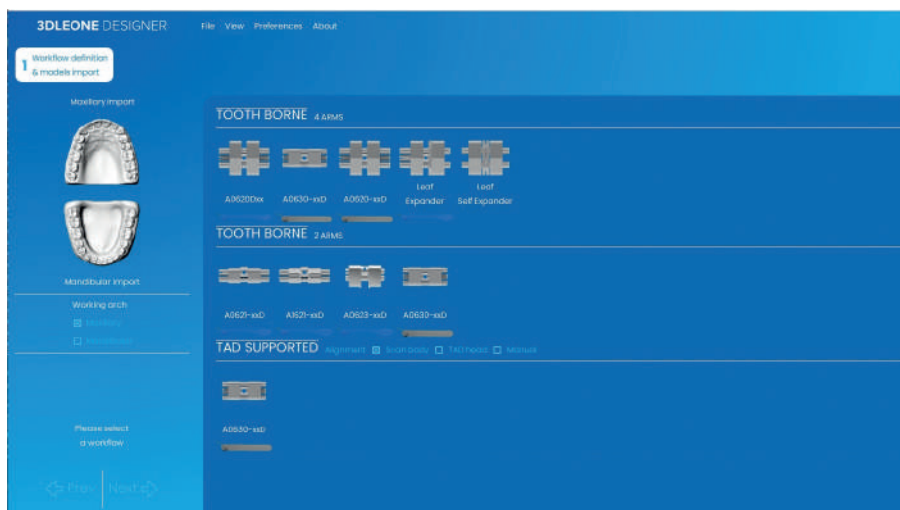


Designing and creating
new entirely customized
orthodontic solutions

Thanks to the feedbacks received from various markets, **3DLEONE DESIGNER** is continuously updated, aiming to become the best digital tool for the contemporary orthodontic lab.
The latest improvements include:

NEW INCREASED LEONE CAD-CAM EXPANDER LIBRARY

The range of available screws has been implemented with Leone's best seller expanders - the single arm Stealth, the Leaf Series, the Torko screw for lower arch - in order to allow the lab to design almost every fixed expansion appliance.

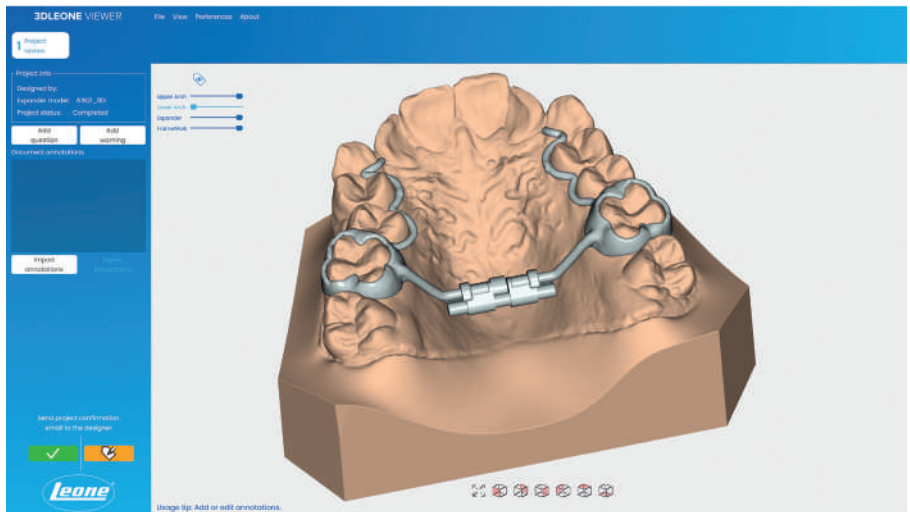


NEW TOOL ALLOWS FULL CUSTOMIZATION AND QUICKER DESIGN

It is possible to customize the preference menu and define designing features as offset, thickness or diameter, shape, inner geometry of support and bands, as well as the use **of 3 buttons mouse, and 3D mouse for an enhanced experience.**

3DLEONE DESIGNER VIEWER

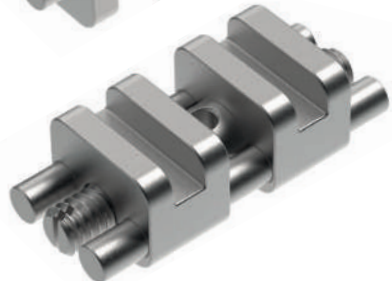
Thanks to the free viewer, the clinician can review the project made by the laboratory and communicate to the lab technician eventual changes or his/her approval through a built-in direct chat.



Review,
check and
approve

CAD-CAM

Expanders



■ First RPE
screws series designed
for a fully digital workflow

CAD-CAM expanders allow the manufacturing of totally customized appliances with dental anchorage, hybrid (teeth and TADs) and bone borne in a full digital workflow, by using 3DLeone Designer software. Thanks to a manufacturing process called Laser Melting, the .STL file will become a high precision sintered framework, that will fit perfectly the slots on the expander bodies to then be joined permanently by laser welding.

CAD-CAM expanders are manufactured by biomedical stainless steel with increased mechanical properties and a dedicated geometry of the male screw head that allow us to declare, based on in-vitro tests performed, a strength higher than 60 kgf, about 50% higher than standard RPE.

These features ensure the treatment efficiency even with maxillary expansion in adult patients with 2 or 4 TADs.



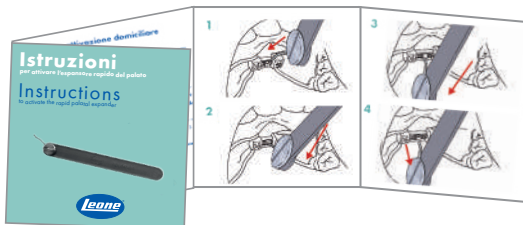
■ SQUARED slots

The CAD-CAM expanders bodies feature squared slots, instead of the standard arms. The squared slots allow a correct oriented coupling of digitally designed customized laser melted framework and, thanks to their geometric shape, the full transmission of the expansion forces to the teeth and/or TADs



■ Strengthened swivel key

ONLY for CAD-CAM expanders, supplied inside the package, it is more resistant than standard one and its use is mandatory in order to enable the full transmission of expansion forces



■ Instructions to activate the expander

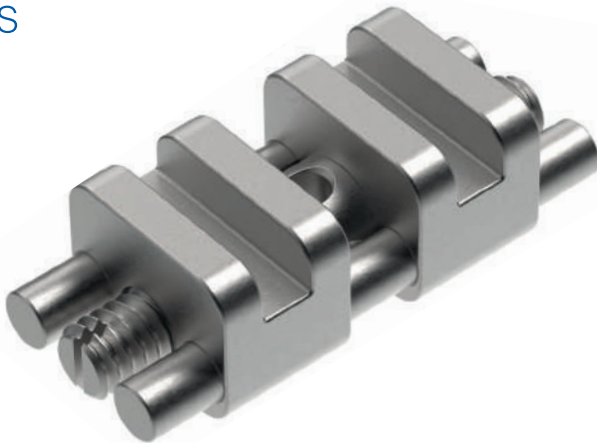
useful for parents and clinicians

Anatomical expander

CAD·CAM
EXPANDER
PATENTED



■ Ideal and reliable
with TADs



LEARN
MORE



Leone America












The anatomical CAD-CAM expander looks like a regular anatomical expander with orthogonal arms, but it is a device optimized for the CAD-CAM procedure, featuring 2 squared slots allowing perfect fitting and welding of the laser melted framework. The reduced overall size, the exclusive self-centering guides system, the strengthened stainless steel of the male screw, allow the positioning of the expander even in case of very narrow palates and high resistance and reliability throughout the therapy, even for the usage in MARPE appliances in adult patients. Expansion capacity in mm, directional arrow and lot number are laser marked on the body of the screw.

Supplied with:

- 1 stainless steel key
- 1 strengthened swivel key with handle
- instructions for the patient

■ .STL file available on the website www.leone.it and included in the library of 3DLeone Designer software



		CODE				activation turns	
6 mm front view	4,5 mm back view		mm body mm	mm	mm	for maximum expansion limit	
		A0630-08D	1,5 x 1,5	12	8	0,8	40
		A0630-10D	1,5 x 1,5	14	10	0,8	50
		A0630-12D	1,5 x 1,5	16	12	0,8	60

Rapid expander

CAD·CAM
EXPANDER
PATENTED



■ The strongest RPE
of the range



LEARN
MORE



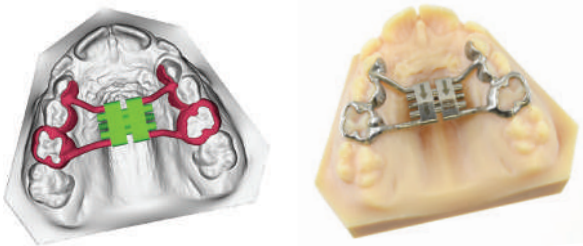
Leone America















CAD-CAM rapid expander looks like the world's best sellers expander, but it is a device optimized for the CAD-CAM procedure, featuring 4 squared slots allowing perfect fitting and welding of the laser melted framework. The exclusive self-centering guides system, the strengthened stainless steel of the male screw and the guides and the optimal ratio between bulkiness and size, ensure a reliable treatment and a perfect bio-mechanical expansion control throughout the therapy even for the usage in MARPE appliances in adult patients. Expansion capacity in mm, directional arrow and lot number are laser marked on the body of the screw.

Supplied with:

- 1 stainless steel key
- 1 strengthened swivel key with handle
- instructions for the patient

■ .STL file available on the website www.leone.it and included in the library of 3DLeone Designer software



		CODE					activation turns
11 mm <i>front view</i>	4 mm <i>back view</i>		mm	body mm	mm	mm	for maximum expansion limit
		A0620-08D	1,5	12	8	0,8	35
		A0620-09D	1,5	14	9	0,8	40
		A0620-11D	1,5	16	11	0,8	50
		A0620-13D	1,5	18	13	0,8	60

CAD-CAM

Tooth borne

Expanders



**NEW
LINE**

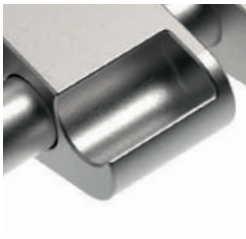


■ New expanders
designed for tooth
borne appliances

leone America

Leone's CAD-CAM Tooth Borne expander series broadens the Leone expander CAD-CAM range. The most popular and used Leone expanders have been optimized to be included in a fully digital workflow to manufacture expansion appliances with dental anchorage.

The CAD-CAM tooth borne expanders are made of stainless steel and manufactured according to the high-quality Leone standards. They feature transversal housings to be coupled with the digital designed and sintered framework, instead of the arms as the classic models.



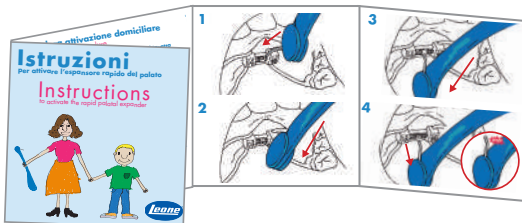
■ EMBEDDED slots

The Tooth borne CAD-CAM expanders bodies feature slots embedded in the body profile that allow a correct oriented coupling of digitally designed customized laser melted framework. This feature guarantees a high reliability of the device throughout the therapy.



■ Swivel key

Each expander comes with the classic blue swivel key. Also available with activation turn counter



■ Instructions for use of expanders

useful for parents and clinicians

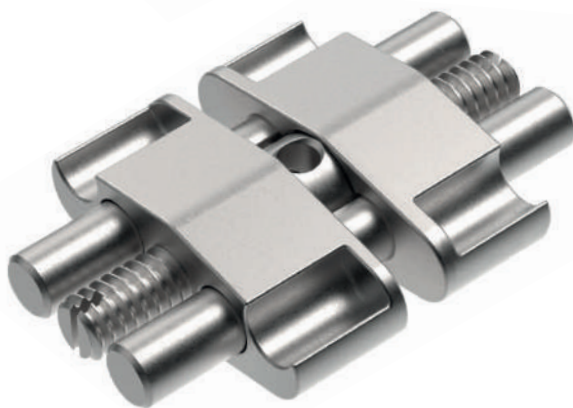
Rapid expander Tooth borne

CAD·CAM
EXPANDER
PATENTED

NEW
LINE



■ Classic design
goes digital



Leone America

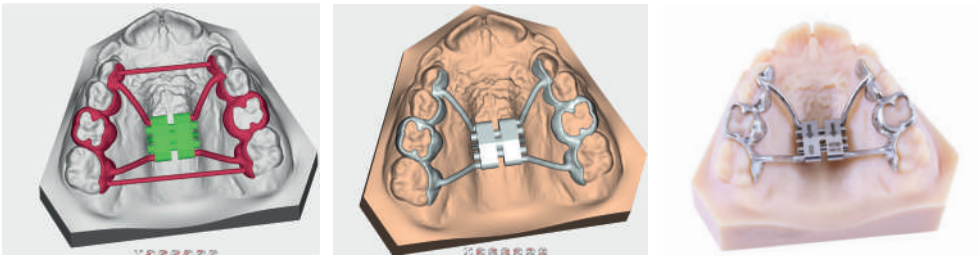
The CAD-CAM Rapid Expander Tooth Borne screw is the optimized CAD-CAM version of the Leone's best seller expander: instead of the arms, it has four transversal housings with an ending stop on the bodies that allow a perfect oriented coupling with the digitally designed and SLM manufactured framework, thus assuring an optimal laser welding process.















It is recommended for the utilization on tooth borne appliances. This series of expanders keeps all the features and sizes of our worldwide famous expander, allowing doctors to smoothly switch to digital manufactured RPEs.

Expansion capacity in mm, directional arrow and lot number are laser marked on the body of the screw.

Supplied with:

- 1 stainless steel key (to be used only inside the lab)
- 1 blue swivel key with handle
- Instructions for the patients



		CODE					activation turns
11 mm front view	4 mm back view		mm	body mm	mm	mm	for maximum expansion limit
		A0620D08	2	12	8	0,8	35
		A0620D09	2	14	9	0,8	40
		A0620D11	2	16	11	0,8	50
		A0620D13	2	18	13	0,8	60

Stealth

Easy Access
micro expander

Tooth borne

CAD·CAM
EXPANDER
PATENTED

NEW
LINE



- The smallest expander of the range

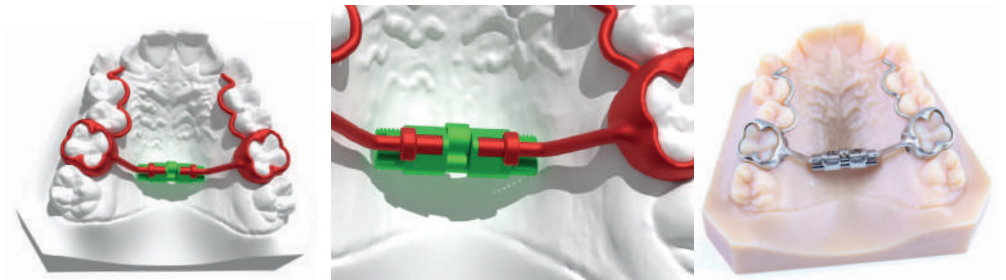














This expander is the optimized CAD-CAM version of the Stealth Easy Access. Instead of the arms, it has two transversal housings with an ending stop on the bodies that allow a perfect oriented coupling with the digitally designed and SLM manufactured framework, thus assuring an optimal laser welding process.

Thanks to the more visible screw holed-head, the micro expander A1621D allows an easier intraoral activation with the swivel key. It is recommended for dental anchored expanders. This series of expander keeps all the features and sizes of our classic worldwide famous expander, allowing doctors to smoothly switch to digital manufactured RPEs. Expansion capacity in mm, directional arrow and lot number are laser marked on the body of the screw.

Supplied with:

- 1 stainless steel key (to be used only inside the lab)
- 1 swivel key with handle
- Instructions for the patients



		CODE					activation turns
4,95 mm front view	4,05 mm back view		mm	body mm	mm	mm	for maximum expansion limit
		A1621-08D	2	12	8	0,8	35
		A1621-11D	2	16	11	0,8	50
		A1621-13D	2	18	13	0,8	60

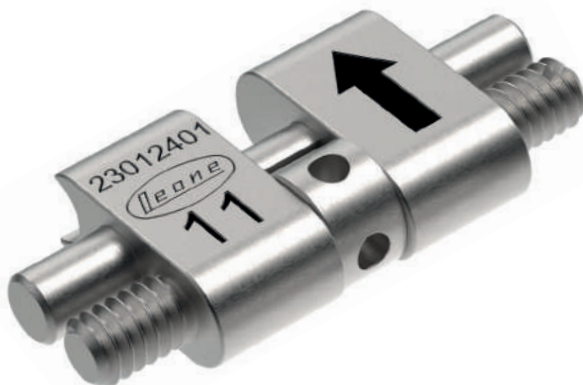
Torko

Expander for lower arch

Tooth borne

CAD·CAM
EXPANDER
PATENTED

NEW
LINE



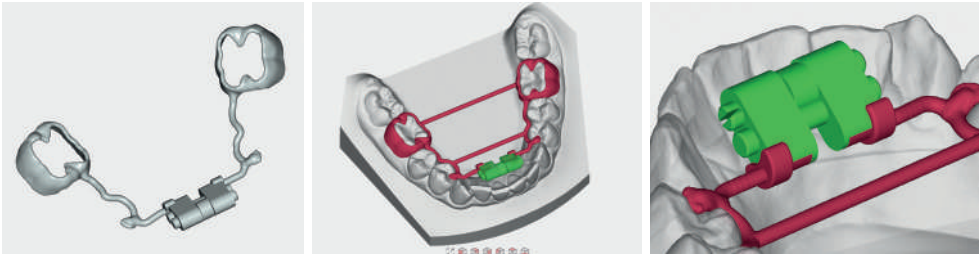
- Flat profile
ideal for lower arch



The CAD-CAM expander for lower arch Tooth Borne is the optimized CAD-CAM version of the Torko lower screw. Instead of the arms, it has two transversal housings with an ending stop on the bodies that allow a perfect oriented coupling with the digitally designed and SLM manufactured framework, thus assuring an optimal laser welding process. The main characteristics are the same of the classic A0623 expanders, featuring a flat profile that reduces the overall bulkiness, particularly important since it is recommended for the use on lower jaw tooth borne appliances. Expansion capacity in mm, directional arrow and lot number are laser marked on the body of the screw.

Supplied with:

- 1 stainless steel key (to be used only inside the lab)
- 1 key with safety ring leash
- Instructions for the patients



		CODE					activation turns
7,5 mm	4 mm		mm	body mm	mm	mm	for maximum expansion limit
front view	back view						
		A0623-08D	2	12	8	0,8	35
		A0623-11D	2	16	11	0,8	50

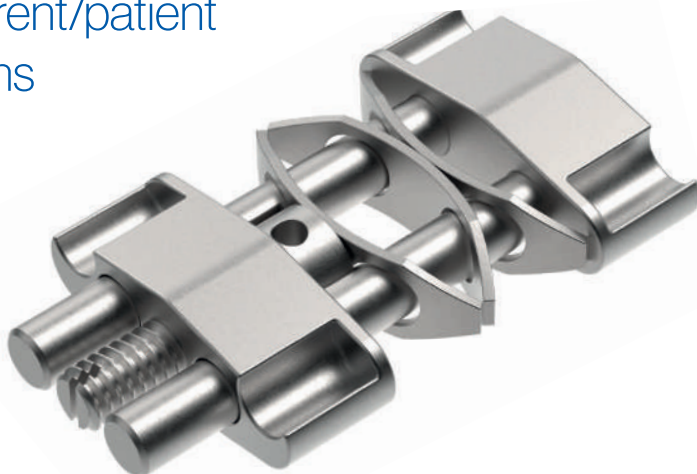
Leaf expander Tooth borne

CAD·CAM
EXPANDER
PATENTED

NEW
LINE



- No parent/patient activations

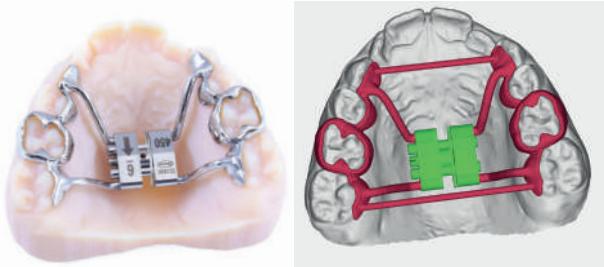









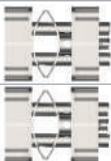
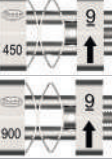
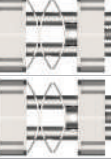
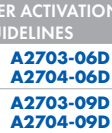
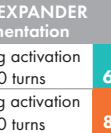
The CAD-CAM Leaf Expander is a spring loaded expander that, along with the male screw, has two or three MEMORIA Ni-Ti leaf springs that allow the release of calibrated and continuous forces to promote the expansion of the maxillary arch. It is a device optimized for the CAD-CAM procedure, instead of the arms it has four transversal rounded slots on the bodies that allow a correct oriented coupling for the welding of digitally designed customized laser melted framework. The main features are the same as the standard Leaf expander series. It is recommended for the utilization on tooth borne appliances. This expander series keeps the efficiency of the classic expander while looking towards the future.

Supplied with:

- 1 stainless steel key
(to be used only inside the lab)
- 1 swivel key with handle

■.STL file available on the website www.leone.it and included in the library of 3DLeone Designer software



			CODE					activation turns
11 mm	4 mm			mm	body mm	mm	mm	for maximum expansion limit
front view	back view							
		A2703-06D 2 springs 450 g approx		2	12	6	0,4	30
		A2704-06D 2 springs 900 g approx		2	12	6	0,4	30
		A2703-09D 3 springs 450 g approx		2	12	9	0,4	45
		A2704-09D 3 springs 900 g approx		2	12	9	0,4	45

EXPANDER ACTIVATION GUIDELINES		LEAF EXPANDER cementation		FIRST visit		SECOND visit		THIRD visit
6 mm	A2703-06D A2704-06D	spring activation 0 turns	after 6 weeks	10 turns	after 4 weeks	10 turns	after 4 weeks	10 turns
9 mm	A2703-09D A2704-09D	spring activation 0 turns	after 8 weeks	15 turns	after 6 weeks	15 turns	after 6 weeks	15 turns

Leaf Self expander Tooth borne

CAD·CAM
EXPANDER
PATENTED

NEW
LINE



■ For a non-compliance
treatment



leone America

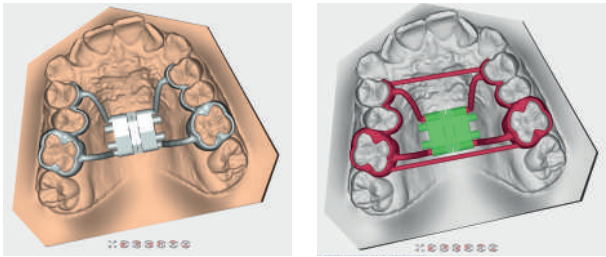
Leaf Self Expander is a spring loaded expander equipped with four or six MEMORIA Ni-Ti leaf springs that allow the release of calibrated and continuous forces to promote the expansion of the maxillary arch.







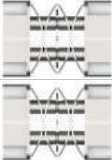
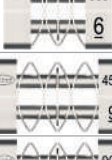

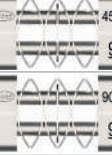



It is a device optimized for the CAD-CAM procedure: instead of the arms it has four transversal rounded slots on the bodies that allow a correct oriented coupling for the welding of digitally designed customized laser melted framework.

The main features are the same as the standard Leaf expander series. It is recommended for the utilization on tooth borne appliances.

This expander series keeps the efficiency of the classic expander while looking towards the future.

■ STL file available on the website www.leone.it and included in the library of 3DLeone Designer software



		CODE			
11 mm	4 mm		mm	body mm	mm
front view	back view				
 450 6		A2705-06D 4 springs 450 g approx	2	12	6
 900 6		A2706-06D 4 springs 900 g approx	2	12	6
 450 9		A2705-09D 6 springs 450 g approx	2	12	9
 900 9		A2706-09D 6 springs 900 g approx	2	12	9

LEONEAMERICA
Dental Products Inc.

is the sole distributor of Leone Spa
products in US, Canada and Puerto Rico



1400 Graves Ave. Unit A
Oxnard, CA 93030
805-487-9860
info@leoneamerica.com

leoneamerica.com