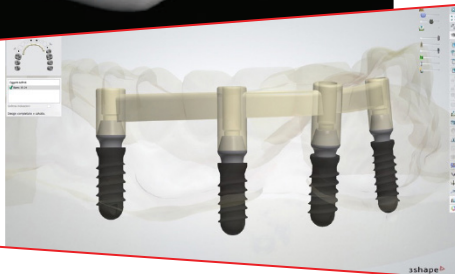
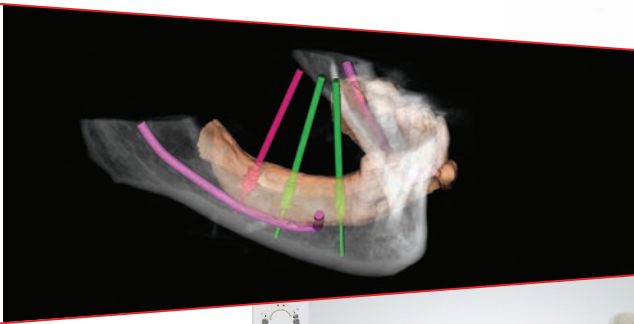


IMPLANT SYSTEM

XCN[®]

3D Leone



3DLEONE SERVICES

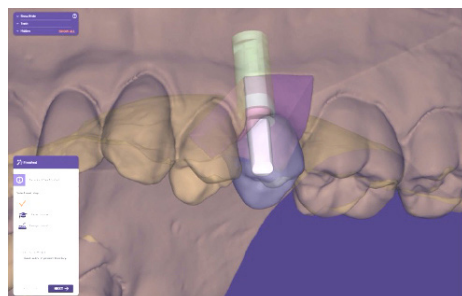
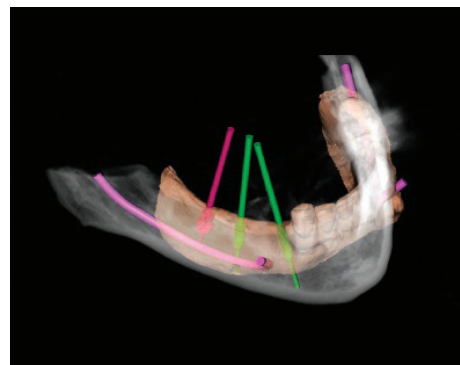
The 3DLeone Department is highly specialized in digital technologies for implant-prosthetic treatment and aims to facilitate the use of software both in diagnostics and planning as well as prosthetic fabrication.

SUPPORT FOR GUIDED SURGERY

The Leone Guided Surgery method is the result of a synergistic process based on the professional knowledge of the clinician and the technician. It is carried out using digital instruments, dedicated surgical and laboratory devices with the technical support and online tutoring of our 3DLeone department.

The availability of 3D files of Leone's devices in the libraries of the most widely used software programs allow to plan the position of the implants on the basis of the anatomical conformation and of the specific prosthetic needs.

The project is realized in the design of a CAD-CAM surgical guide that permits the use of the innovative ZERO1 drill (*patented*) for the realization of the osteotomy with maximum operational simplicity, safety and great precision.



SUPPORT FOR DIGITAL PROSTHETICS

The most popular prosthetic software programs have our dedicated prosthetic components in the library that allow the fabrication of single teeth, cement-retained, screw-retained and conometric-retained bridges and bars by CAD-CAM production, making it possible to meet all the needs of the clinician and the patient.

On the Leone website you can download the libraries of the CAD-CAM software in which the Leone system is present: www.leone.it/english/implantology

CONTACTS

- visit www.3dleone.it
- or contact us at 3d@leone.it