

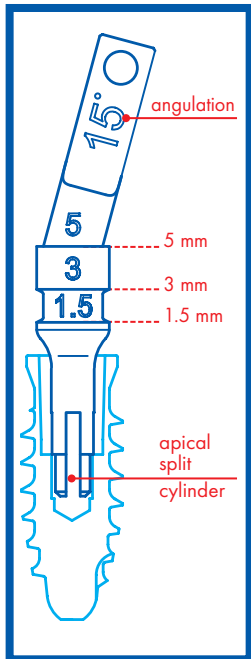
XCN[®] IMPLANT SYSTEM

PROSTHETIC AND
LABORATORY INSTRUMENTS

ABUTMENT GAUGES

- made of stainless steel
- one instrument for two functions: measurement of soft tissue thickness and selection of the most appropriate abutment angulation
- for universal use, suitable for all abutment types and for both connection diameters, green and yellow
- the apical split cylinder ensures excellent retention in the internal hexagon of the implant/analog allowing for free rotation to 360°
- ideal for immediate loading procedures
- with a hole for the placement of a safety leash
- autoclavable for safe use in the dental office and in the laboratory

Pack of 1



straight



7.5° angled



15° angled



25° angled



35° angled

2:1

REF **141-0000-00** **141-0075-00** **141-0015-00** **141-0025-00** **141-0035-00**

ORGANIZER FOR ABUTMENT GAUGES

- made of PPSU plastic material
- entirely autoclavable

Pack content:

- 1 abutment Gauge 0°
- 1 abutment Gauge 7.5°
- 1 abutment Gauge 15°
- 1 abutment Gauge 25°
- 1 abutment Gauge 35°



REF **141-0001-03**

ABUTMENT SEATER

- made of stainless steel
- provides the right percussive force to seat the healing cap and the abutment into the implant
- to activate the connection between the preformed conometric cap and the MUA-Conic
- interchangeable seating tips
- autoclavable

ABUTMENT SEATER WITH STRAIGHT TIPS



REF **156-1008-03**

Pack content:

- 1 abutment seater
- 1 straight titanium tip
- 1 straight PEEK tip



1:1

ABUTMENT SEATER WITH OFFSET TIPS



REF **156-1008-04**

Pack content:

- 1 abutment seater
- 1 offset titanium tip
- 1 offset PEEK tip



1:1

SEATING TIPS

- made of medical grade 5 titanium and PEEK
- to be screwed onto the abutment seater
- **straight tips:** for the anterior region
- **offset tips:** for the posterior region
- **PEEK tips:** for ceramic crowns, MUA, ExaConnect, MUA-Conic and preformed conometric caps
- **flat tip:** for angled abutments for cement-retained prosthesis
- autoclavable

Pack of 1

straight titanium tip

REF **156-1008-01**



straight PEEK tip

REF **156-1008-08**



offset titanium tip

REF **156-1008-02**



offset PEEK tip

REF **156-1008-09**



flat titanium tip

REF **156-1008-06**



HEX HEAD EXTRACTOR FOR HEALING CAPS

- made of stainless steel
- to unlock the healing cap and thus permit its removal
- hexagon on both ends for easy use in all situations
- autoclavable

Pack of 1



1:1

REF **156-1006-00**

WEINGART STYLE PLIERS

- made of stainless steel
- to firmly hold the abutment during try-in phases
- with rounded and ribbed tips for a safe grip of the abutment
- autoclavable

Pack of 1



1:1

REF **P2104-00**

REMOVAL TOOL FOR ABUTMENTS

- made of stainless steel
- allows the application of the extraction force necessary to remove a definitively seated abutment from the implant
- **two models:** one for all abutments of the Standard prosthetic platform and one for all abutments of the Large prosthetic platform
- autoclavable

Pack of 1



1:1

REF **156-1022-01**

standard

REF **156-1022-02**

large

SCREW ADAPTERS

- made of stainless steel
- for use with the prosthetic hand screwdriver, the prosthetic torque wrench and the lab torque screwdriver to tighten the connecting screws, the healing screws and the Conic adapter
- autoclavable

Pack content:

- 1 screw adapter
- 1 prosthetic hand screwdriver



1:1

REF **126-0003-00**

126-0003-01

PROSTHETIC HAND SCREWDRIVER

- made of medical grade 5 titanium
- for use with the specific screw adapter to hand tighten the connecting screws, the healing screws and the Conic adapter
- with a hole for the placement of a safety leash
- autoclavable

Pack of 1



1:1

REF **156-1001-00**

PROSTHETIC TORQUE WRENCH 25 Ncm

- made of stainless steel
- for use with the specific screw adapter to tighten the connecting screws and the Conic adapter with a torque of 25 Ncm
- two-way function: to screw in and unscrew
- can be disassembled for cleaning
- autoclavable

Pack of 1



1:1

REF **156-1014-26**

TORQUE SCREWDRIVER 25 Ncm FOR LABORATORY

- made of stainless steel
- for use with the specific screw adapter to tighten the connecting screws and the Conic adapter with a torque of 25 Ncm
- two-way function: to screw in and unscrew
- do not disassemble for cleaning
- autoclavable

Pack of 1



1:1

REF **156-2006-00**

HANDLE FOR ABUTMENTS

- made of medical grade 5 titanium
- for use during abutment preparation in the laboratory and in the dental office

Pack of 1



for abutment with \varnothing connection (mm)

2.2

1:1

REF **156-1007-33**



for abutment with \varnothing connection (mm)

3.0

1:1

REF **156-1007-41**

SURGICAL DEMONSTRATION KIT

- to simulate the most relevant surgical and prosthetic phases of the XCN® implant system
- intended for demonstration use only

Pack content:

- 1 hemi-mandible
- 1 Classix implant Ø 4.1 mm (non-sterile) 10 mm long with cover cap and 5 cover cap refills connection 3.0
- 1 instrument for cover caps
- 1 Standard healing cap connection 3.0 GH 3 mm
- 1 Standard transfer connection 3.0
- 1 surgical hand screwdriver
- 1 hex head extractor
- 1 straight Standard Basic abutment connection 3.0



REF **106-0002-00**

HEMI-MANDIBLE

- made of polyurethane
- presents a hole for the placement of a Classix implant Ø 4.1 mm, 10 mm long

Pack of 1

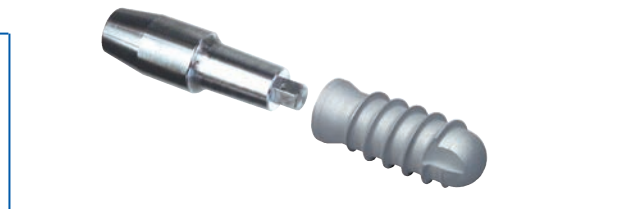


REF **106-0001-00**

DEMONSTRATION JUMBO DENTAL IMPLANT

- made of aluminium
- scale 5:1 reproduction of straight Standard Basic abutment connection 3.0 and Classix implant Ø 4.1, 10 mm long
- use the rod included in the package for removal of the abutment from the Jumbo implant. A hole is present in the back of the implant for the rod.

Pack of 1



REF **106-0003-00**

IMPLANT CARD

- supplied with each implant
- for unique identification of the placed implant
- for delivery to the patient
- contains essential information in case of dental care away from home or abroad



PATIENT INFORMATION BROCHURE

- available on request

Pack content: 50 brochures in a carton box

