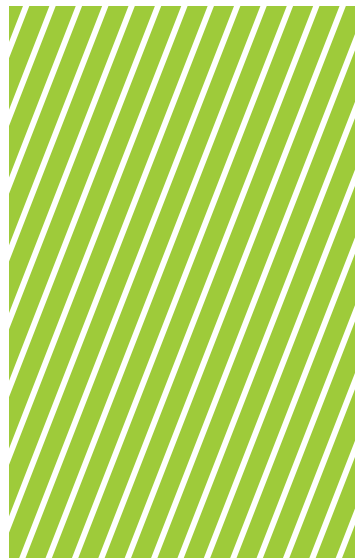


DIAGNOSTIC AND LABORATORY EQUIPMENT



T



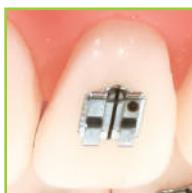
DEMONSTRATION MODELS FOR FIXED ORTHODONTICS

Two-tone acrylic normo-occlusion demonstration models are useful for the visualization of the bracket characteristics for both patients and potential customers. Available with brackets of various types, steel, ceramics and even self-ligating; single Low Profile tubes are present on the molars in all demonstration models.

Pack of 1



T3472-00
DEMONSTRATION MODEL - MINI DIAGONALI®



T3442-00
DEMONSTRATION MODEL - MIDI DIAGONALI

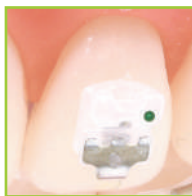


T3461-00
DEMONSTRATION MODEL - STEP SYSTEM 2.0





T3457-00
DEMONSTRATION MODEL - AQUA SL



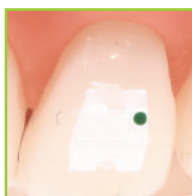
T3411-00
DEMONSTRATION MODEL - INTERACTIVE SL



T3456-00
DEMONSTRATION MODEL - GHIACCIO



T3458-00
DEMONSTRATION MODEL - AQUA



T3061-00
PLASTIC
MODEL BASES

Impact resistant, white plastic model bases, with rear hinges to maintain the occlusion.

Square-edged according to international standards and a constant height that permits to make models comparable over time and in all views for the correct diagnosis and for monitoring during therapy. For use with the practical positioning plate T3062-02 supplied with the package.

Precision and ease of working models, that can also be performed directly in the dental office.

Pack content:

- 100 upper bases
- 100 lower bases
- 2 position plates with guide rails and labels



T3062-00
SPARE HINGES
FOR MODEL BASES

Pack of 10

T3062-01
SPARE LABELS
FOR MODEL BASES

Pack of 100

T3062-02
POSITION PLATES
FOR MODEL BASES

Pack of 10 with 20 guide-rails

T1121-00
VERTICAL MODEL
OCCLUDER

Entirely made of stainless steel with high precision. The double sliding guides prevent from any undesired lateral movement. Models can be disengaged from the occluder by loosening the locking screw.

Locking screw T1122-00.





**RUBBER
MODEL BASE
FORMERS**

T3320-00 Large
Pack of 2,
1 upper and 1 lower

T3321-00 Small
Pack of 2,
1 upper and 1 lower



**T3355-00
MODELBOX**

Transparent PVC model containers supplied with pre shaped sponges for full protection of models.

Pack of 100



**T3529-00
ACRYLIC TEETH
FOR TYPODONT T3330-00**

Purposely designed for Typodont T3330-00, they are necessary for making practice with the direct bonding brackets.

Pack of 28 teeth



WAX BASES FOR TYPODONT

- T3332-00** Class I
- T3336-00** Normal occlusion
- T3337-00** Class II, I div.
- T3338-00** Class II, II div.
- T3339-00** Class III

Pack of 2,
upper and lower



T1315-00
LEONE HYDROFLASK

Orthodontic cold curing acrylics require the polymerization under pressure technique. This kind of polymerization enables the vaporization of monomer and condensing of acrylic, which will perfectly fit the plaster model. Plates are coming out perfectly finished and can be immediately polished. The Leone hydroflask allows you to make use of the polymerization under pressure technique easily and economically.

Technical features:

Inside dimensions: 100 x 115 mm
Outside dimensions: 111 x 130 mm
Pressure gauge
Exhaust valve
Made of hard aluminium
Built-in thermometer



T1310-00
LEONE HYDROFLASK

With the same features as T1315-00, without thermometer and slightly smaller.

Technical features:

Inside dimensions: 100 x 88 mm
Outside dimensions: 111 x 105 mm
Pressure gauge
Exhaust valve
Made of hard aluminium

**REPLACEMENT PARTS
FOR HYDROFLASK**

T2300-00	Hydroflask lid
T2301-00	Rubber seal for lid
T2302-00	Air valve
T2303-00	Thermometer for T1315-00
T2304-00	Pressure gauge



T1311-00
PRESS FOR HYDROFLASK

Convenient press for hydroflasks T1310-00 and T1315-00, made of pressure cast aluminium. Extremely easy to use.

**TRAYS
FOR MODEL BASES**

T3360-00	Blue
T3361-00	Red

Two drawers for storing six model bases each box.

Outer sizes: 250 x 200 x 80 mm.

Pack of 16 boxes

**TRAYS
FOR STUDY MODELS**

T3350-00	Blue
T3351-00	Red

Two drawers for storing eight models each box.

Outer sizes: 285 x 190 x 55 mm.

Pack of 24 boxes





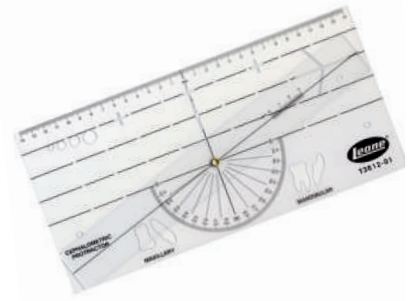
T3603-00
ACETATE SHEETS FOR
CEPHALOMETRIC TRACING

Sheets with double matt and polish surface. Sizes: 203 x 254 mm.
Pack of 100 sheets



T3608-00
MARKING
PENCIL WHITE

For marking arch wires, bite planes, etc.
Pack of 1



T3612-01
CEPHALOMETRIC
PROTRACTOR

The angular measurement is facilitated by the ruler; the cut-out tooth symbols of incisors, molars and circular holes assist in the anatomical tracing over the x-ray film.
Pack of 1



T1565-00
SAW



BLADES FOR SAW
T1565-00

T1566-00 12 lame per gesso

T1567-00 12 lame per metallo



SAW
FOR SET-UP

T1561-00 Saw with 1 blade

T1563-00 12 large serrated blades

Easy change of blades and perfect handiness.

LEONE COPOLYMER DUPLICATION PLATES

Sizes: 130 x 140 mm, 2 or 3 mm thick, these plates are made of a special material getting soft and gelatinous at a temperature of 90° C. Just dip in boiling water, lay on the model and press over with the duplicating press: a fine detailed model impression is obtained.

T0900-02 Pack of 50 plates 2 mm thick

T0900-03 Pack of 50 plates 3 mm thick



T0900-92 Pack of 500 plates 2 mm thick

T0900-93 Pack of 500 plates 3 mm thick



T1200-00
PLIER RACK



T1203-00
PLIER RACK



T1212-00
STANDARD ARCHWIRE HOLDER