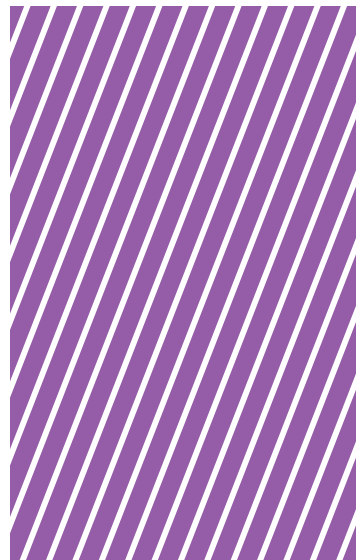


# ELASTICS AND LIGATURES



**K**



Leone offers elastics manufactured with the best quality of latex available.

The innovative low friction **SLIDE\*** ligatures are manufactured in a special medical grade polyurethane mix providing all the advantage of low friction biomechanical properties with faster therapeutic times and without the need of extractions. These ligatures are especially indicated for use with Logic Line brackets.

Leone modules for ligatures are stamped from elastomer offering the best elasticity and resistance to oral liquid absorption.

Leone wires for metal ligatures are manufactured out from a high vacuum annealed alloy for the best fit and higher mechanical load.

## SLIDE LOW FRICTION LIGATURES

---



## MINI MODULES LIGATURES

---



## WIRES FOR METAL LIGATURES

---



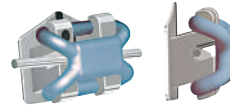
\*PATENTED



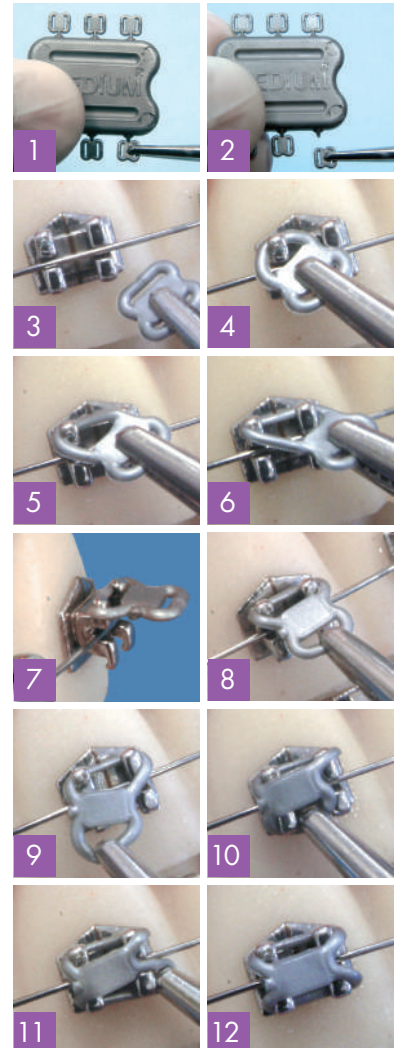
**SLIDE**  
**LOW FRICTION LIGATURES**

**SLIDE** is a product manufactured with a special polyurethane mix for medical use. It is applied similarly to conventional elastic ligatures. Once placed on the bracket, it creates a passive ligature on the slot that makes the archwire free to slide and to produce its effects on the dentoalveolar structures. This ligature is especially indicated for use with Logic Line brackets which are featuring a housing to keep **SLIDE** ligature in place for integration in the bracket profile. The particular conformation of the **SLIDE** ligature considerably improves patient's comfort during the first phases of treatment.

**Pack of 10 modules, 6 ligatures each**



colour	extra-small	small	medium	
	<b>blue</b>	<b>K6254-10A</b>	<b>K6251-10A</b>	<b>K6252-10A</b>
	<b>yellow</b>	<b>K6254-10G</b>	<b>K6251-10G</b>	<b>K6252-10G</b>
	<b>green</b>	<b>K6254-10V</b>	<b>K6251-10V</b>	<b>K6252-10V</b>
	<b>white</b>	<b>K6254-10</b>	<b>K6251-10</b>	<b>K6252-10</b>
	<b>red</b>	<b>K6254-10R</b>	<b>K6251-10R</b>	<b>K6252-10R</b>
	<b>pink</b>	<b>K6254-10S</b>	<b>K6251-10S</b>	<b>K6252-10S</b>
	<b>black</b>	<b>K6254-10N</b>	<b>K6251-10N</b>	<b>K6252-10N</b>
	<b>ice</b>	<b>K6224-10</b>	<b>K6221-10</b>	<b>K6222-10</b>
	<b>silver</b>	<b>K6264-10</b>	<b>K6261-10</b>	<b>K6262-10</b>





**SLIDE COLOURED LIGATURES KIT**

- K6254-93** extra-small
- K6251-93** small
- K6252-93** medium

**Pack of 432 pcs:**  
72 assorted modules, 6 ligatures each in 6 colors (pink, red, white, green, yellow, blue)

**K6260-95 SLIDE LIGATURE SILVER KIT**

**Pack of 432 pcs:**  
72 modules, 6 ligatures each:  
24 extra-small, 24 small, 24 medium

**LOW FRICTION LIGATURES SLIDE AQUA**

- K6214-10** extra-small
- K6211-10** small
- K6212-10** medium

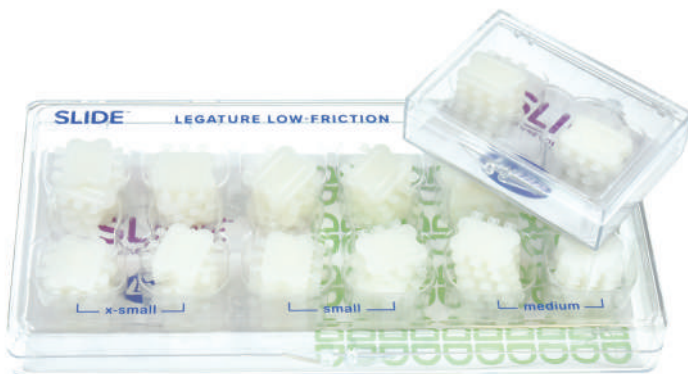
Thanks to an innovative manufacturing process, the new **SLIDE** low friction ligatures **AQUA** are not subject to corrosion by oral liquids and are now even more resistant to discoloration (a recurring issue with transparent elastomers). Changing ligatures frequently is no longer necessary and perfect aesthetics is guaranteed. This ligature is indicated for use with Logic Line aesthetic brackets (pages 123-126) which are featuring a housing to keep Slide ligature in place for the integration in the bracket's profile.

Clear color.

**Pack of 10 modules, 6 ligatures each**



Courtesy of Dr. A. Fortini

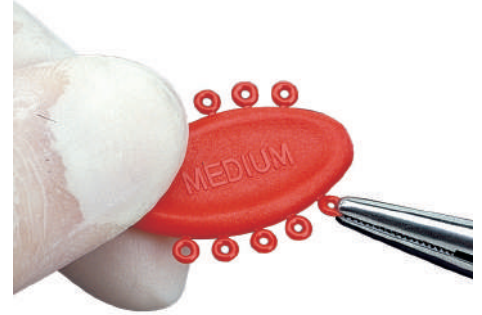


**K6210-93 SLIDE AQUA LIGATURE KIT**

**Pack of 432 pcs:**  
72 assorted modules, 6 ligatures each:  
24 extra-small, 24 small, 24 medium

**ELASTIC LIGATURES**

Manufactured out from high elastic material with a precision injection moulding process. The perfect ring section facilitates the ligature of the brackets. The use of the mini modules allows for a better control of infections.



**ELASTIC COLOURED LIGATURE KIT MINI MODULES**

- K7351-93** inner diam. 1,0 mm - **small**
- K7352-93** inner diam. 1,3 mm - **medium**
- K7353-93** inner diam. 1,6 mm - **large**

**Pack of 840 rings:**  
6 mini modules of 10 rings each in 7 colours

**K7320-93 ELASTIC LIGATURE KIT SILVER AND TRANSPARENT MINI MODULES**

**Pack of 840 rings:**  
84 assorted mini modules of 10 rings each:  
24 small, 36 medium, 24 large

**MINI MODULES**

colour	small inner diam. 1,0 mm	medium inner diam. 1,3 mm	large inner diam. 1,6 mm
<b>blue</b>	<b>K7351-10A</b>	<b>K7352-13A</b>	<b>K7353-16A</b>
<b>pink</b>	<b>K7351-10S</b>	<b>K7352-13S</b>	<b>K7353-16S</b>
<b>green</b>	<b>K7351-10V</b>	<b>K7352-13V</b>	<b>K7353-16V</b>
<b>yellow</b>	<b>K7351-10G</b>	<b>K7352-13G</b>	<b>K7353-16G</b>
<b>red</b>	<b>K7351-10R</b>	<b>K7352-13R</b>	<b>K7353-16R</b>
<b>orange</b>	<b>K7351-10E</b>	<b>K7352-13E</b>	<b>K7353-16E</b>
<b>purple</b>	<b>K7351-10L</b>	<b>K7352-13L</b>	<b>K7353-16L</b>
<b>transparent</b>	<b>K7321-10</b>	<b>K7322-13</b>	<b>K7323-16</b>
<b>silver</b>	<b>K7361-10</b>	<b>K7362-13</b>	<b>K7363-16</b>

200 pcs.

**Pack of 20 mini modules,**  
10 rings each



∅		grey	transparent	
inner				pkg.
1,30 mm	long	<b>K6460-13</b>	<b>K6420-13</b>	spools of 5 m (15 feet)
	short	<b>K6465-13</b>	<b>K6425-13</b>	
	extra short	<b>K6466-13</b>	<b>K6426-13</b>	



long



short



extra short

**ELASTIC CHAINS FOR LIGATURES**

Manufactured out from high elastic material with a precision injection moulding process. The perfect ring section facilitates the ligation of the brackets. The use of the mini modules allows for a better control of infections.

**ELASTIC CHAIN KITS**

**K6429-93** Transparent  
**K6469-93** Grey

**Pack of 6 spools:**  
 - 3 short  
 - 2 closed  
 - 1 long on a plexiglas rack

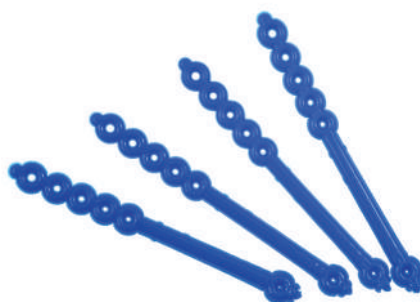
**NEW**



**K6378-03 RADIOPAQUE SEPARATORS**

The circular section, combined with excellent and constant elasticity, allows easy application by means of P1141-00 pliers, ensuring gradual and comfortable separation of teeth before applying bands. Supplied in a practical pouch, ready-separated and ready for use, not in modules. Radiopaque for safe radiographic localization.

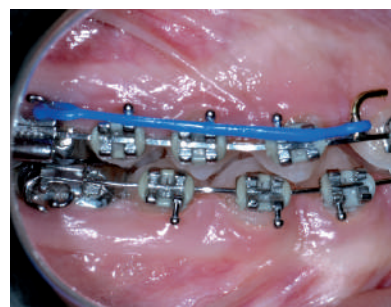
**Pack of 1000**



**K6461-01 TIE-BACK**

For the application of elastic tractions on treatments with **STEP** technique. Easy insertion on molar tube. The four anterior holes allow a perfect dosage of force on archwire hook. Colour: blue.

**Pack of 10**



Courtesy of Dr. A. Fortini



**ELASTIC LIGATING MODULES**

∅	transparent	grey	pink	blue	green	
inner						pkg.
1,0 mm	<b>K7825-10</b>	<b>K7865-10</b>	<b>K7855-10S</b>	<b>K7855-10A</b>	<b>K7855-10V</b>	600 pcs.
1,3 mm	<b>K7825-13</b>	<b>K7865-13</b>	<b>K7855-13S</b>	<b>K7855-13A</b>	<b>K7855-13V</b>	

**ELASTIC WIRE FOR LIGATURES AND TRACTIONS**

Made of highly elastic, atoxic polyurethane. The rough surface enhances the tightness of ligatures and traction loops.

∅	transparent	
mm		pkg.
0,6	<b>K6125-06</b>	8 m

Pack of 30 modules, 20 rings each



**ELASTIC LIGATURES**

Used in replacement of metallic ligatures. Easy engagement under bracket tie wings.

**COTTON THREAD FOR ELASTIC LIGATURES**

A special elasticized cotton thread created for separation, distalization, traction movements of non-erupted teeth, rotation and closure of spaces at the end of treatment.

colour			pkg.
light	transparent	<b>K6320-10</b>	1000 pcs.
medium		<b>K6320-13</b>	
light	grey	<b>K6360-10</b>	
medium		<b>K6360-13</b>	

light	<b>K4030-01</b>	reels of 25 m
medium	<b>K4030-02</b>	
heavy	<b>K4030-03</b>	



**LIGATURE WIRE**

Made of stainless steel.



		Ø			
pkg.		mm	inch		pkg.
spools of 20 g approx.	<b>K4050-23</b>	0,23	.009	<b>K4051-23</b>	spools of 500 g approx.
	<b>K4050-25</b>	0,25	.010	<b>K4051-25</b>	
	<b>K4050-28</b>	0,28	.011	<b>K4051-28</b>	
	<b>K4050-30</b>	0,30	.012	<b>K4051-30</b>	
	<b>K4050-36</b>	0,36	.014	<b>K4051-36</b>	



**ELASTIC LIGATURE WIRE**

500% elongation capacity with little fatigue. High degree of resistance to oral liquid absorption.

Spools of 8 m

Ø	transparent	
mm		pkg.
0,6	<b>K6020-06</b>	8 m



**K0470-00 LABIAL ARCHWIRE TUBE**

Made of a chemically inert material, anti-adhesive, non porous, with a very low friction coefficient. Slightly thermo retractile when heated at 150°C.

For wires 0,7 mm (.028") up to 0,8 mm (.031") in diameter.

Pack of 5 m



**ELASTOMER PROTECTIVE TUBE**

High flexible tube that can easily slip over the arch wire to protect buccal mucosa from damage or irritation. When cut to proper length, it prevents over-closure of spaces.

Ø inner		transparent	
mm	inch		pkg.
0,7	.027	<b>K6940-07</b>	3 m





**PREFORMED WIRE KOBAYASHI**

Once ligature is ready, a traction hook may be formed with the looped soldered end, suitable for any kind of bracket.

∅		Diagram		pkg.
mm	inch			
0,30	.012	<b>K4610-30</b>	100	
0,36	.014	<b>K4610-36</b>		



**K4680-36 NATURA® PREFORMED KOBAYASHI LIGATURES**

Made of wire .014" (0,36 mm) in diameter, twisted, with tooth colour coating.  
**Pack of 100**



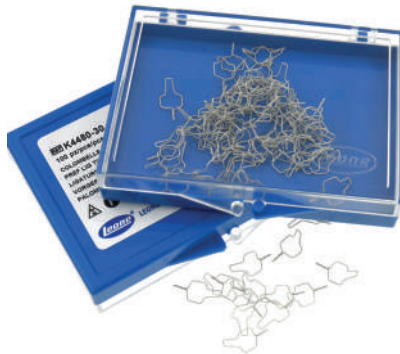
**K4280-30 NATURA® PREFORMED LIGATURE WIRE**

Made of wire .012" (0,30 mm) with tooth colour coating.  
**Pack of 100**



**K4430-25 PREFORMED LIGATURE TIES**

Made of wire .010" (0,25 mm) in diameter.  
**Pack of 1000**



**K4480-30 NATURA® PREFORMED LIGATURE TIES**

Made of wire .012" (0,30 mm) in diameter, with tooth colour coating.  
**Pack of 100**



**PREFORMED LIGATURE WIRE**

∅		Diagram		pkg.
mm	inch			
0,23	.009	<b>K4210-23</b>	1000	
0,25	.010	<b>K4210-25</b>		
0,28	.011	<b>K4210-28</b>		
0,30	.012	<b>K4210-30</b>		

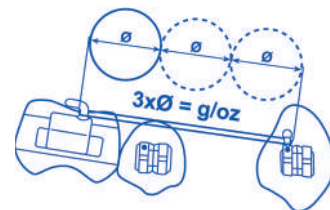


**INTRAORAL ELASTICS**

Cut from pure surgical latex tubing. All packages indicate the diameter size and the elastic pull which comes into force when the elastic is stretched three times its diameter. On each bag a colored image is printed, for an immediate identification from young patients.

**Pack of 10 bags, 100 elastics approx. each bag**

	Ø inner					
	1/8" - 3,2 mm	3/16" - 4,8 mm	1/4" - 6,4 mm	5/16" - 7,9 mm	3/8" - 9,5 mm	
<b>light</b> 2,5 oz - 70 g	<b>K0901-02</b>	<b>K0902-02</b>	<b>K0903-02</b>	<b>K0904-02</b>	<b>K0905-02</b>	
<b>medium</b> 4,5 oz - 126 g	<b>K0906-04</b>	<b>K0907-04</b>	<b>K0908-04</b>	<b>K0909-04</b>	<b>K0910-04</b>	
<b>heavy</b> 6,5 oz - 182 g	<b>K0915-06</b>	<b>K0911-06</b>	<b>K0912-06</b>	<b>K0913-06</b>	<b>K0914-06</b>	



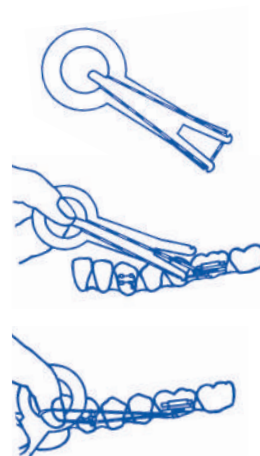
**EXTRAORAL ELASTICS**

Cut from pure surgical latex.  
**Pack of 1 bag**  
with 100 elastics approx.

**K0950-00 APPLICATOR FOR INTRAORAL ELASTICS**

**Pack of 100**

	Ø inner					
	3/16" - 4,8 mm	1/4" - 6,4 mm	5/16" - 7,9 mm	3/8" - 9,5 mm	1/2" - 12,7 mm	
<b>strong</b> 8 oz - 224 g	<b>K0932-08</b>	<b>K0933-08</b>	<b>K0934-08</b>	<b>K0935-08</b>	<b>K0936-08</b>	



**Caution:** these products contain natural rubber latex that may cause allergic reactions